

New building SDMA

Max Planck Society

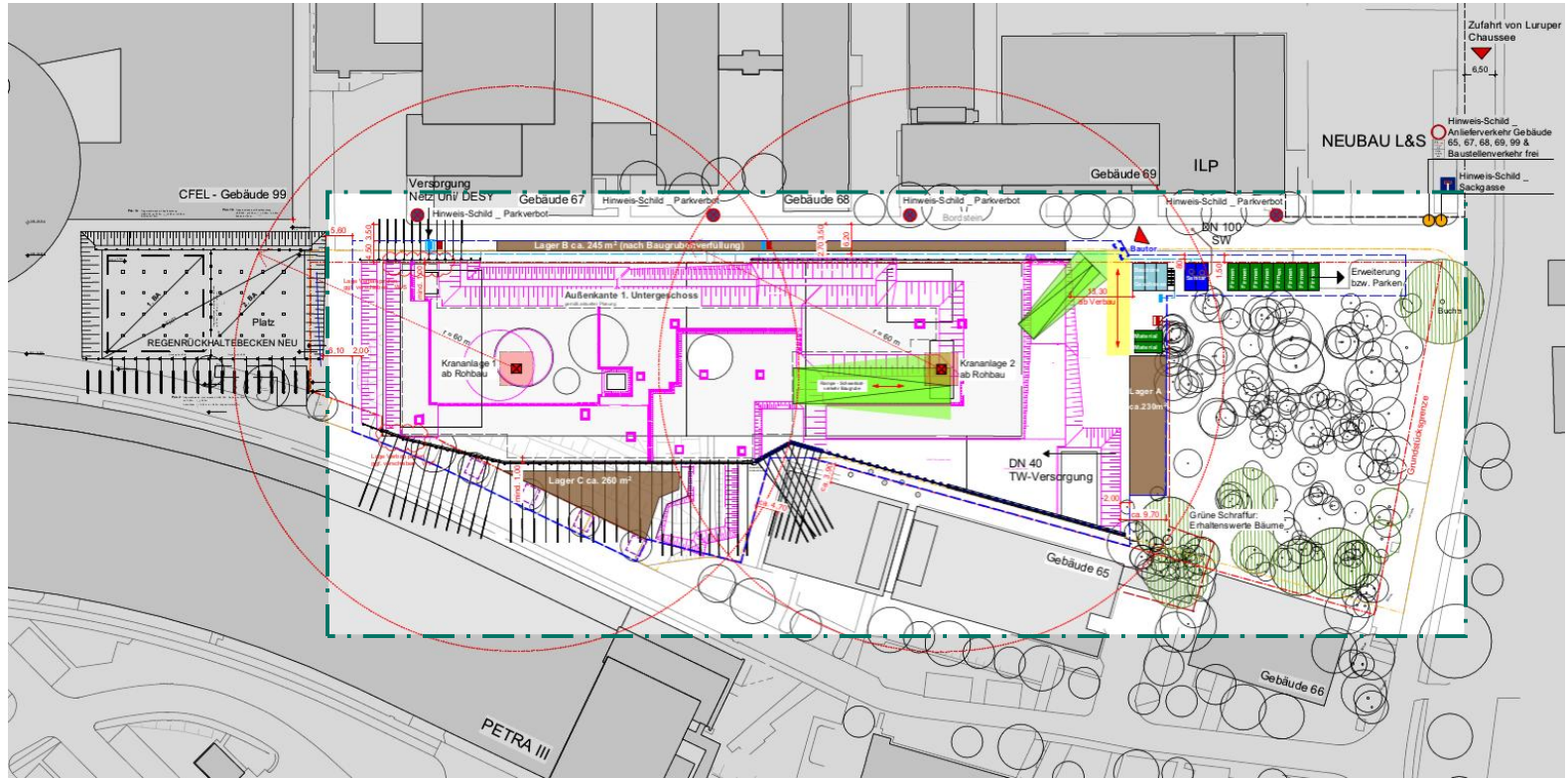


Construction process information meeting

Hamburg, 14.02.2017



Construction-site facility

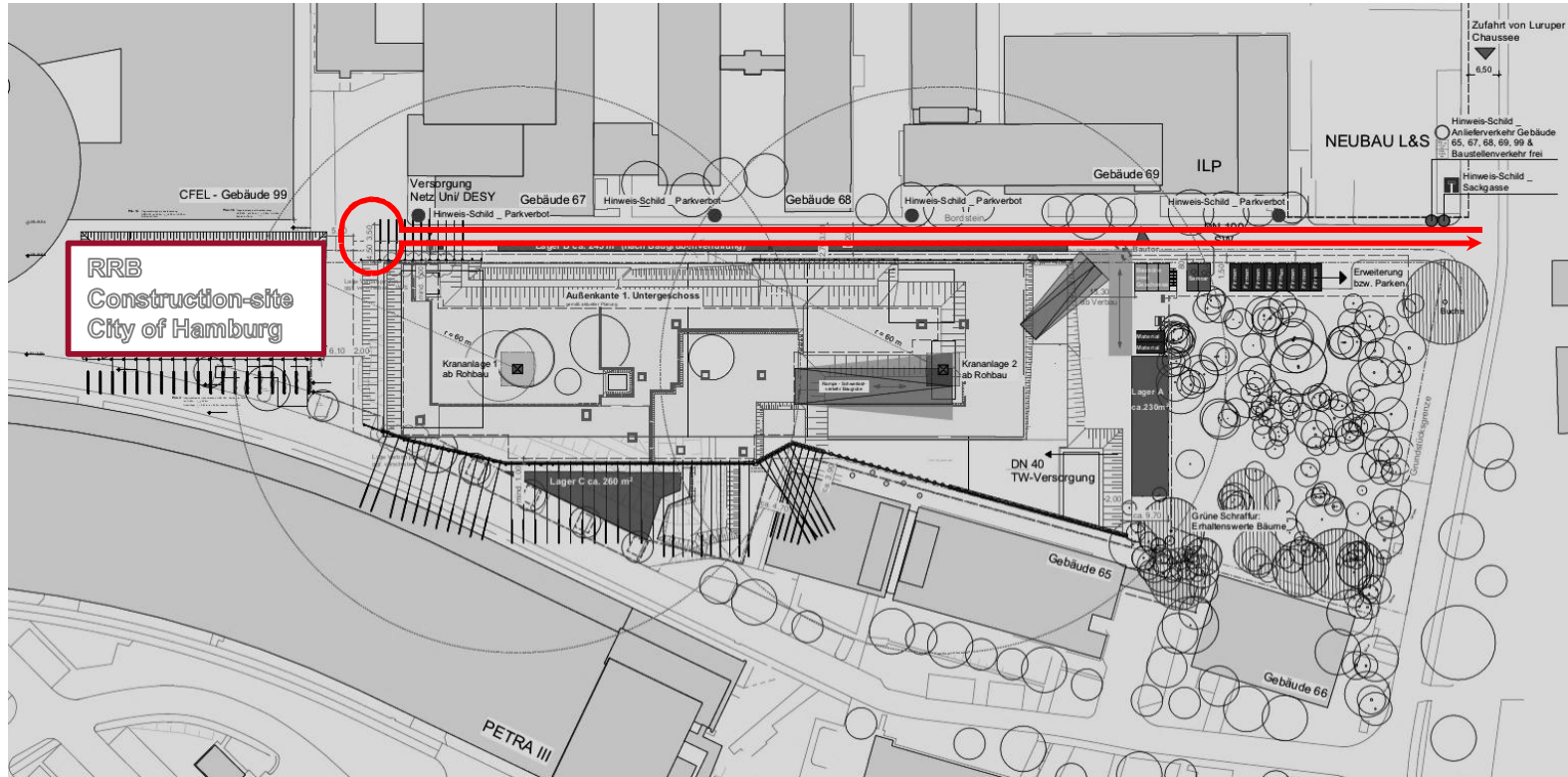


Map of construction-site facility (hammeskrause architekten)

On-site traffic during construction of RRB



RRB = Rain retention basin

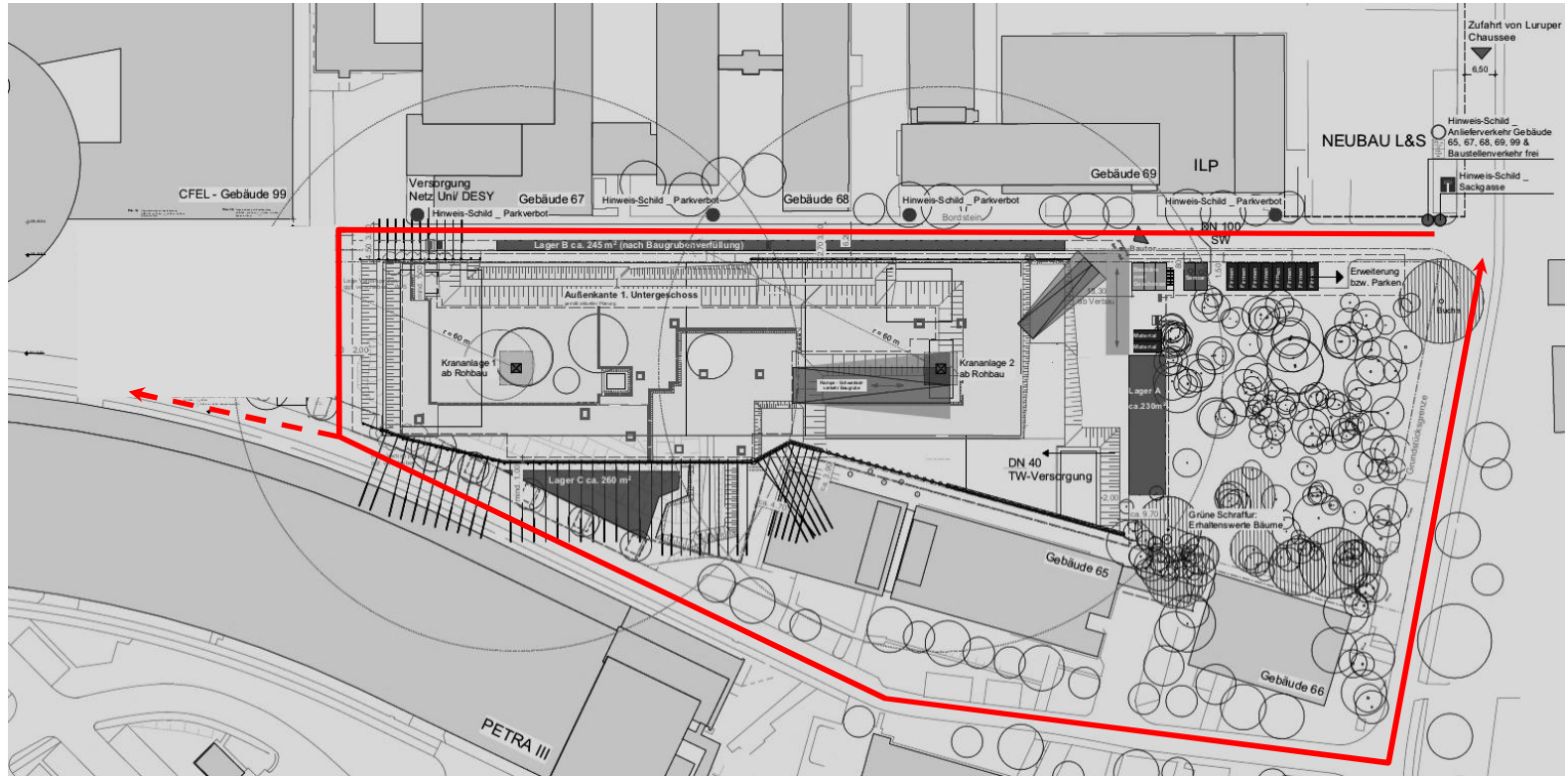


Map of construction-site facility (hammeskrause architekten)

On-site traffic after completion of RRB



RRB = rain retention basin



Map of construction-site facility (hammeskrause architekten)



- § Excavation until the end of April 2017
- § Concrete carcass until the end of March 2018
- § Storefront until the end of May 2018
- § Interior work until the beginning of 2019
- § Completion until summer 2019

Vibrations & noise
Removal of excavation

On-site traffic -
many companies on
the campus





§ Activities with intensive vibrations **within** specified time slots or **after** advanced notice:

- Soil compaction
- Concrete production / Concrete pumps
- Removal of shoring
- Road construction (End of project)

§ Daily works with vibrations **w/o** specified time slots or **w/o** advanced notice:

- Loading and unloading of material
- Installation of storefront / roof / interior



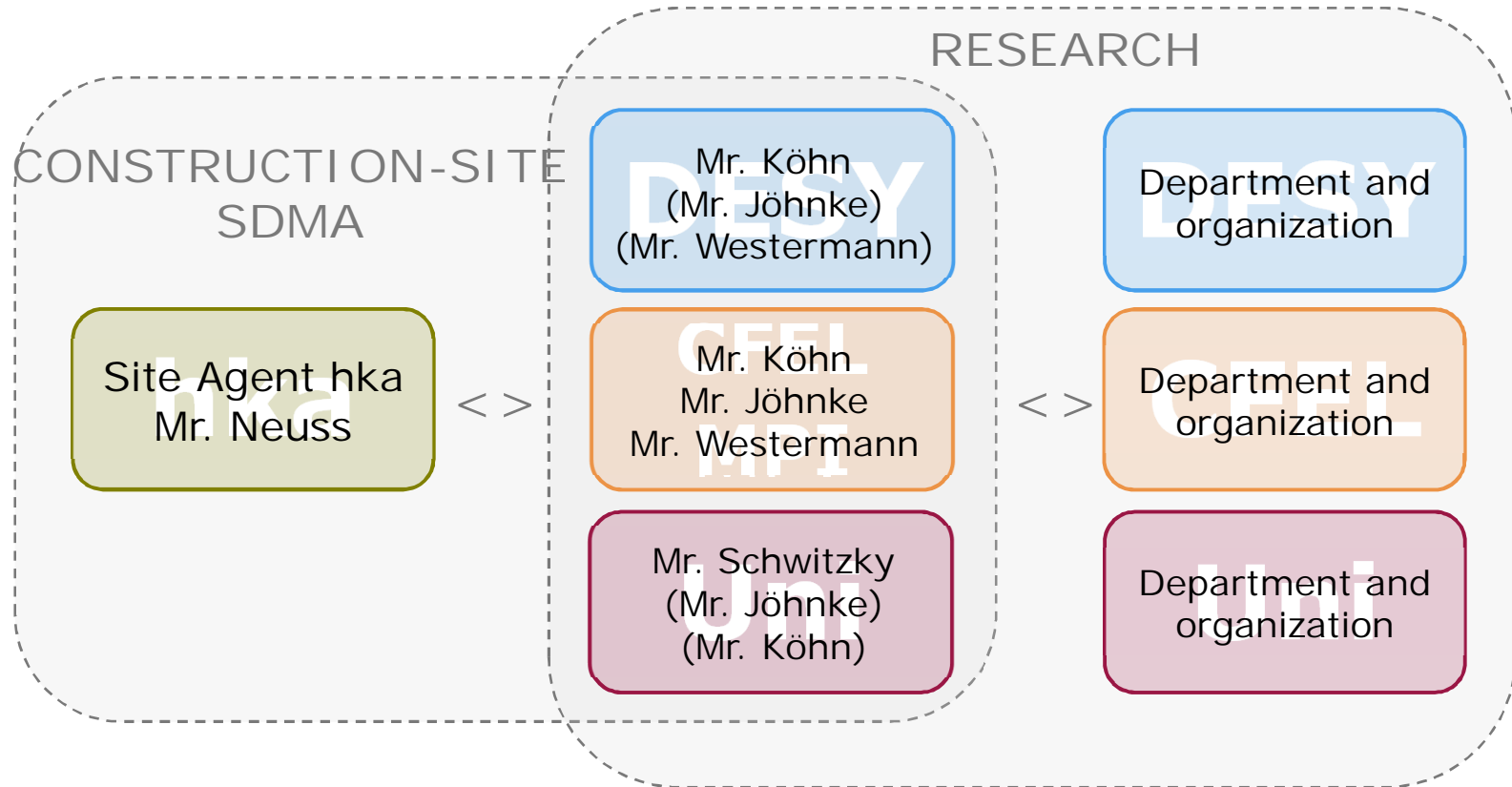
§ Excavation

- Completion of building pit until end of April 2017
- Activities with intensive vibrations: On weekdays prior to 09:00 h and after 14:00 h
- Exceptions will be announced 2 days in advance

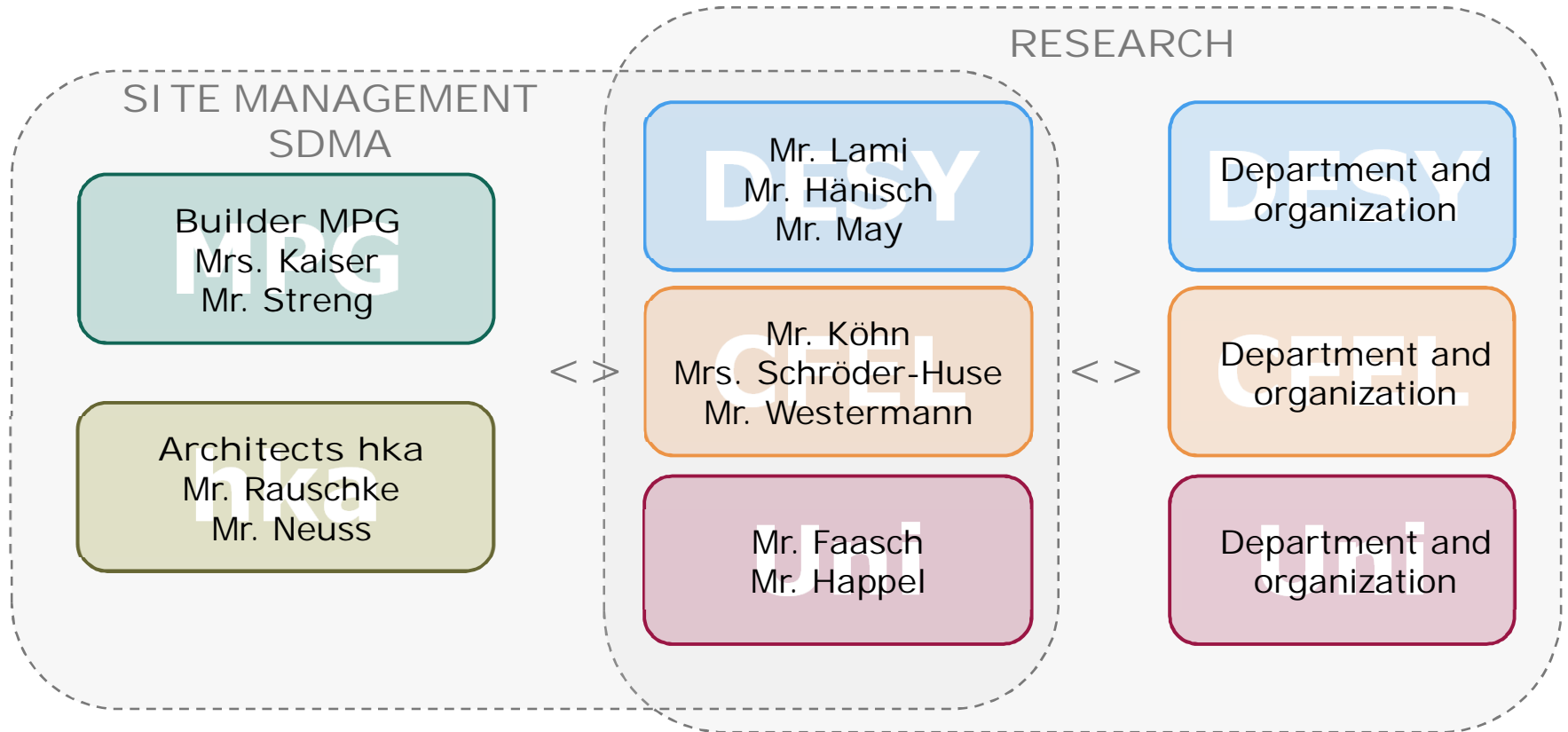
§ Concrete carcass

- Construction of ground slab
May to July 2017 (basement) and until November 2017 (ground floor)
- Activities with intensive vibrations and soil compaction in coordination
(important experiments, i.e. ILP/CFEL/DESY, machine shop,...)

Short-termed information regarding construction-site



Information flow on the Campus



Thank you!



Questions...? (Please refer to the video for questions and answers)



Perspectives of the institute's new building (hammeskrause architekten)